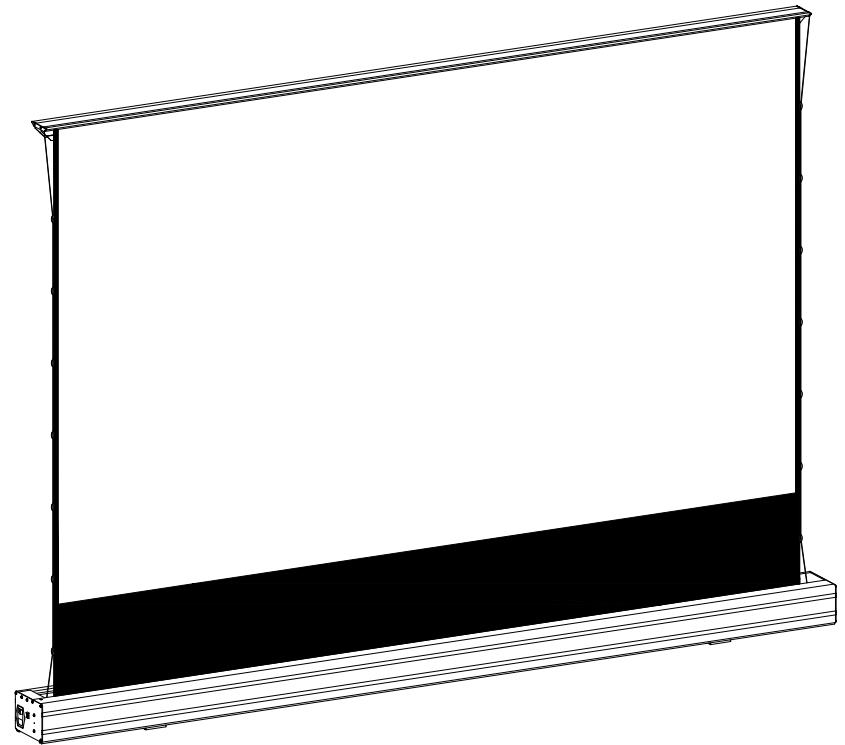


# **MOTORIZED FLOOR RISING SCREEN**

## **USER MANUAL**



thank you for your purchase! Please read this manual carefully before installation and use, and keep it for future reference.

## Matters need attention

### ● Important Safety Instructions

**WARNING** Please strictly abide by the following safety rules. Improper use may result in mechanical damage or personal injury.

- 1 Precautions for installing/using this product.
  - 2 Carefully unpack the screen, always keeping the screen in a horizontal position. Do not install on uneven or inclined surfaces.
  - 3 Do not place heavy objects on the screen to avoid running obstacles.
  - 4 This product is equipped with a strong spring system, please do not attempt to disassemble it by yourself. Disassembled products will void the warranty.
  - 5 5.Please avoid scratching or folding the screen, so as not to damage the screen or produce creases, which will affect the use
  - 6 After using the product, try to recycle the screen into the shell to avoid the screen being polluted by dust and affecting the use of projection.
- Do not raise and lower the screen frequently in a short period of time, otherwise it will cause the motor system to overheat and affect the service life of the motor

**Please read the instruction manual carefully before operating.**

**Please leave the installation and maintenance to professional service personnel**

It is forbidden to arbitrarily debug the screen itinerary

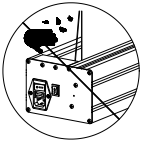
Our company will not be liable for any mechanical damage or casualty accident caused by any installation, operation error, any natural disaster or other reasons.

cleaning

Use a soft, non-corrosive, dry cloth, alcohol, and neutral soapy water to gently wipe the screen surface and casing . Do not use chemicals or corrosive materials to wipe the screen, otherwise may cause damage

## Precautions

- ★ Prevent any debris from falling into the screen case, which could damage the screen
- ★ When the screen is running, do not put your hand into the screen box to prevent pinching.



## Auto Leveling System

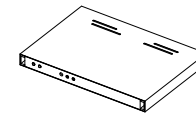
- ★ The screen adopts the latest automatic leveling system, when the screen rises to the highest state, it will drop 5cm automatically to keep the screen relatively flat.
- ★ The cable pulling device of the screen is a special material with certain elasticity and toughness, which will automatically adjust according to the tightness of the black edge of the screen.

## Accessories description

After unpacking, first check if the accessories are complete:

NO.	Part Name	Quantity	NO.	Part Name	Quantity
1	silver screen	1 pcs	9	Support bracket A	2 pcs
2	handbook	1 pcs	10	Support bracket B	2 pcs
3	Power cord	1 pcs	11	Soft hair brush	1 pcs
4	Remote control	1 pcs	12	Lint brush	1 pcs
5	USB trigger	1 pcs	13	Carbon fiber strip	4 pcs
6	M5 Expansion plug	4 pcs	14	white gloves	1 pcs
7	M5*12 Screw	4 pcs	15	Card ejector pin	1 pcs
8	M5*40 Screw	4 pcs			

(Optional product): Electric telescopic platform



Tip: When the screen has been used for a long time and has accumulated dust or fibers, you can use a soft bristled brush to clean it.

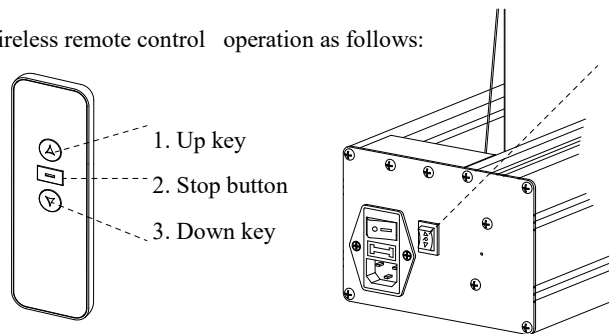
When the screen has been used for a long time and wrinkles appear on the surface, you can use your hand to flatten the wrinkles and then tear off the back of the carbon fiber strip

Stick the adhesive tape horizontally onto the wrinkled area and tighten it tightly. Helps eliminate wrinkles and unevenness.

## Screen usage

Attention: The screen has been debugged before leaving the factory. Customers are advised not to disassemble and debug this product after receiving it.

Wireless remote control operation as follows:

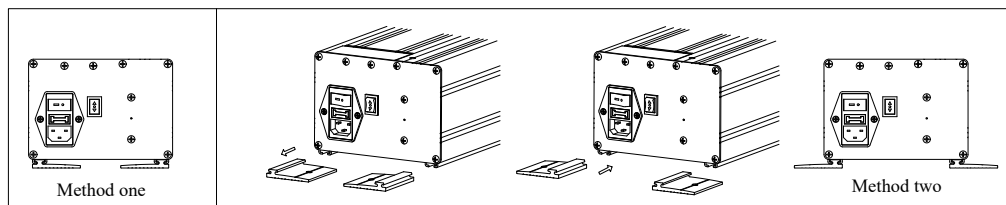


1. Up key
2. Stop button
3. Down key

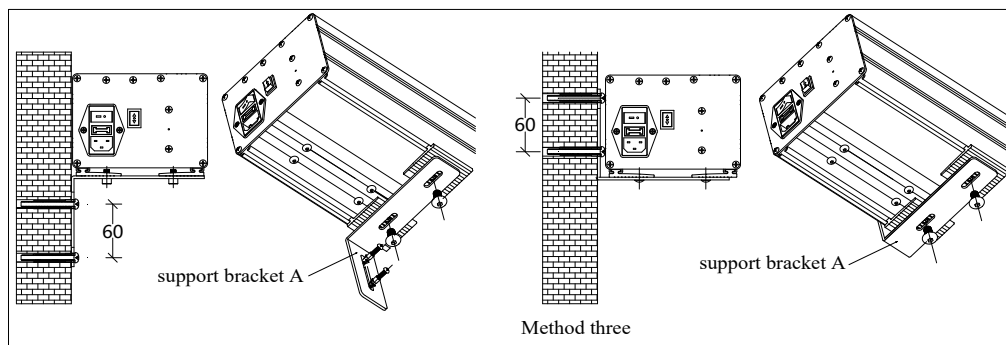
Press the  $\triangle$  key to raise the screen, and press the  $\triangle$  key again to stop the screen; Press  $\nabla$  to descend, then press  $\nabla$  again to stop the screen.

## Installation method

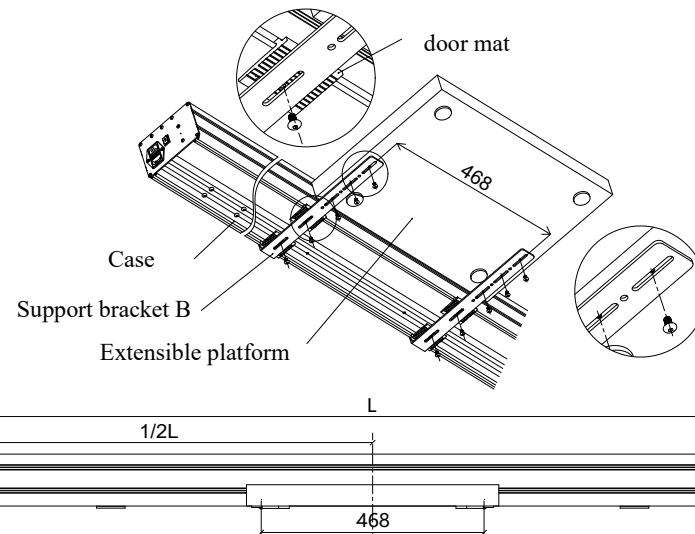
Confirm the installation method of the base based on the on-site situation, as shown in the following figure. (It has been adjusted to mode one before leaving the factory. If you need to use mode two, please adjust it yourself)



Wall installation can also be used, see method three.

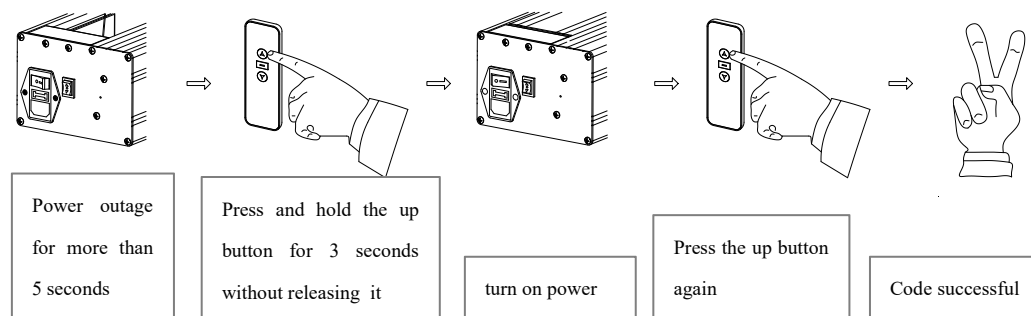


(Optional) Installation of telescopic platform: As shown in the picture, place the telescopic platform bracket at the bottom of the screen shell and install the telescopic platform in the center.



## Commissioning instructions

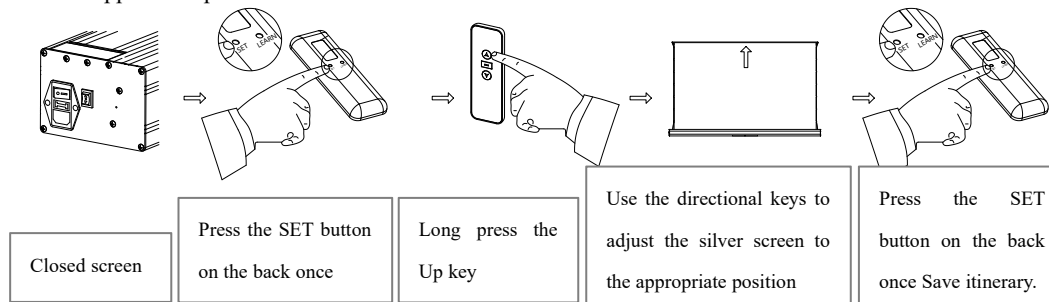
### 1、 Remote control code matching



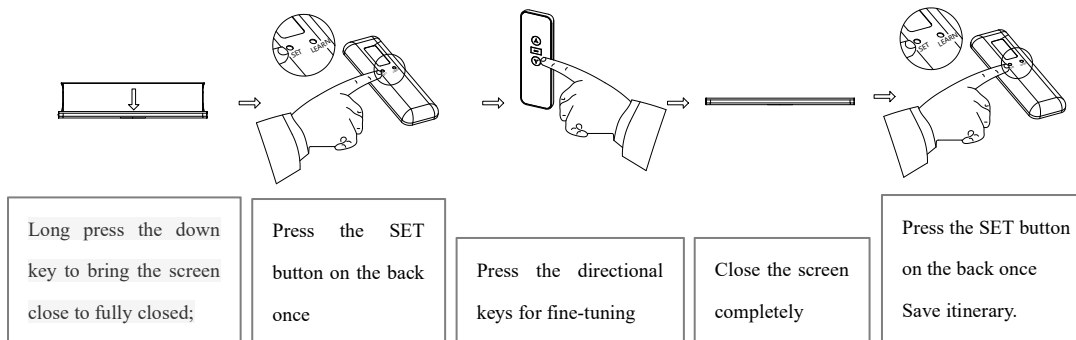
Tips:

- A、 The motor defaults to the linked mode. If the upper and lower limit points have not been set, it will still be jog, or it will also be jog when the limit points are set. Long press the directional control button on the remote control to temporarily switch from jog to linkage. After setting the limit, it will automatically switch to linkage.
- B、 When pressing the SET and LEARN buttons on the back of the remote control, please use sharp objects such as nails.

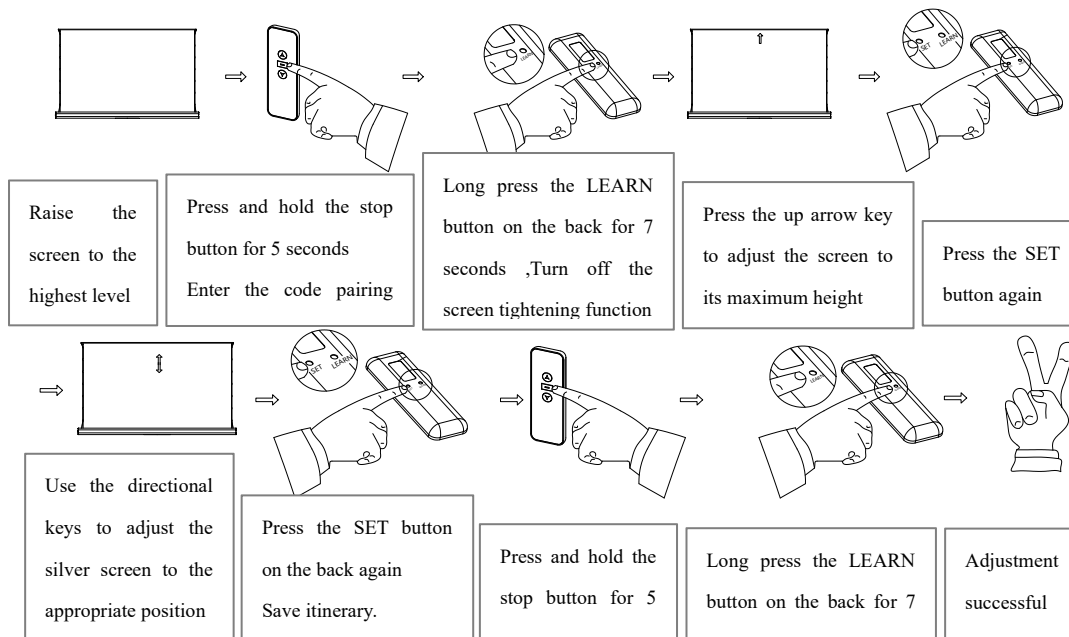
## 2. Set upper limit point:



## 3. Set lower limit point: (factory set, not recommended for user operation)



## 4. Change the upper limit point: (If the user needs to change the height of the black border on the screen)



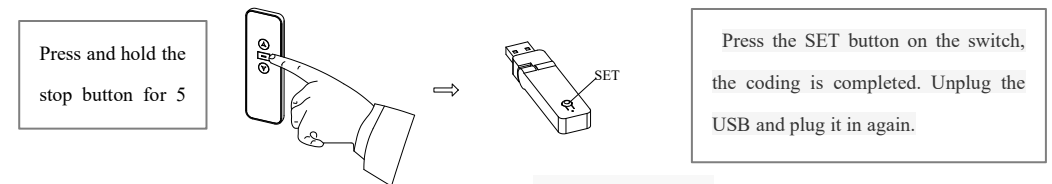
## 5. Delete full code:

Press the stop button on the transmitter for 5 seconds, and the motor will move slightly left and right once before entering the pairing state. Long press the set button on the back of the transmitter for 7 seconds, and the motor will move slightly left and right twice, successfully deleting the full code. After deleting the full code, all the set limits and remote controls become invalid, and the remote control needs to be re-coded.

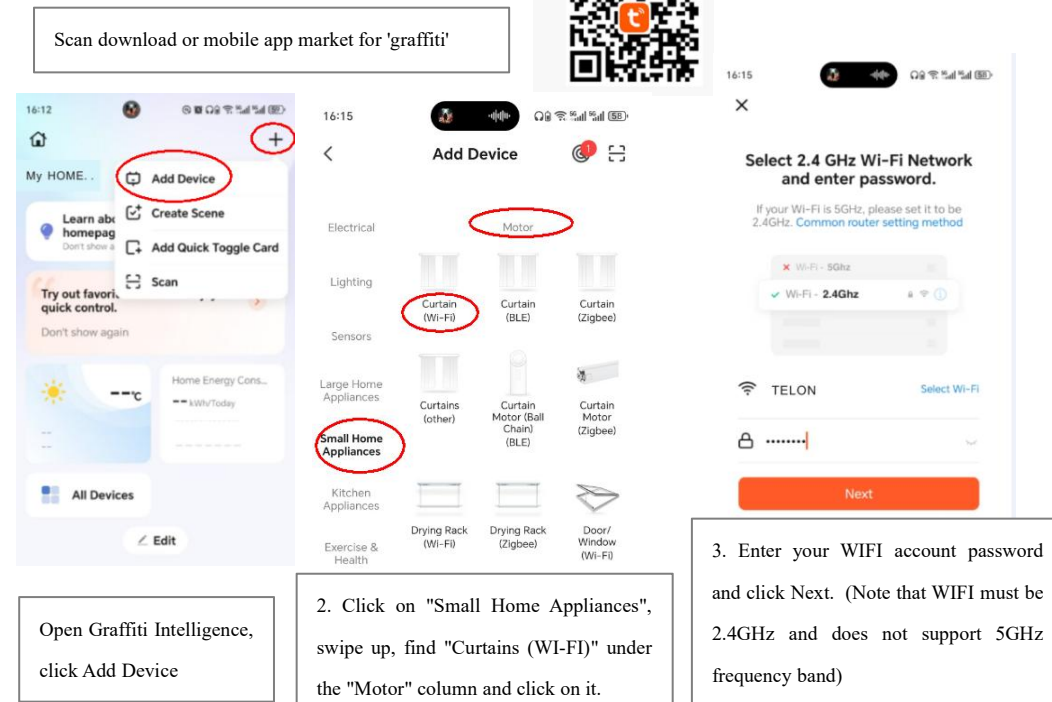
## 6. USB linkage control

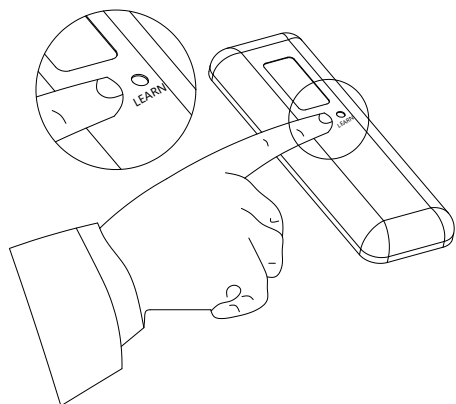
(The projector is powered on, the screen is powered on, and the linkage is plugged into the USB port behind the projector.)

After successful coding, unplug the USB and reinsert the projector interface. Turn off the projector and the screen will descend. Turn on the projector and the screen rises.

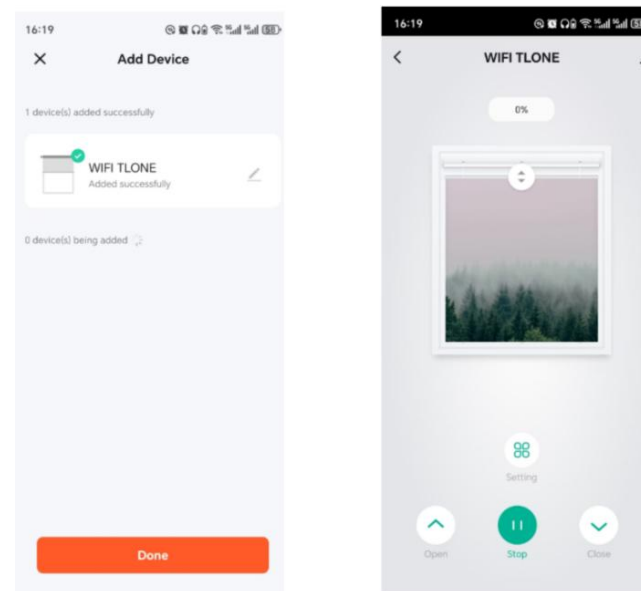
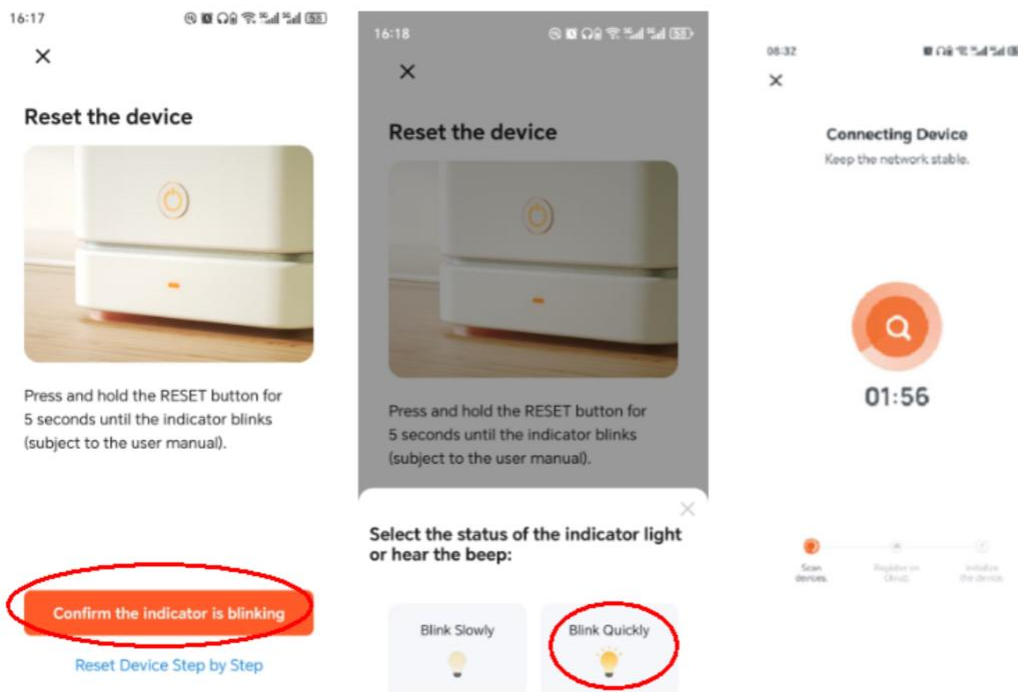


## 7. APP control





Press the "LEARN" key on the back of the remote control three times quickly with a sharp object, the motor will vibrate up and down once, and the pairing state.



Select "WIFI TLONE" to enter the operation interface and control the lifting of the screen through the mobile app. On the operation interface, clicking on the corresponding command can control the screen's rise, stop, and fall. Attention: **Do not click** on the "direction change" column.

### General Troubleshooting

Problem	Cheek point and cause analysis	Solution
Motor does not run	Cheek the power supply, There may be a power shortage	Plug the product into the socket
	The motor has worked continuously for more than 4 minutes, the overheat protection function is initiated	wait for 30 minutes for the motor to cool down and the power will turn on automatically.
	A circuit fault in the three-position switch or remote control receives is preventing the motor from being powered	Replace the corresponding parts
	Three-position switch failure	Press the Reset button(middle button) on the remote control
Remote control failure	The remote control battery is low	Replace the battery
	Not within remote control range	The remote control distance is typically set at the factory to wireless ≤50m
	Try other control methods(such as manual control) to determine if it is a motor problem	Determine whether the remote control is faulty
Screen displacement	severe vibration during transportation causes displacement of the screen, or the user wants to adjust it to the desired position	Adjust the screen position as per the User Manual

### Certificate of conformity

Product Name:	_____
specification & Model:	_____
Factory Code:	_____
Inspector:	_____
Date of Manufacture:	_____

## Warranty Card

this warranty card is an important document for users to enjoy warranty(including"Three Guarantees")services. Please keep it properly when asking for an invoice.

Product Serial NO: \_\_\_\_\_

Origin: \_\_\_\_\_ Warranty Date: \_\_\_\_\_

Date of Purchase: \_\_\_\_\_ MMDDYY

seller' s Name: \_\_\_\_\_ (valid under seal)

seller' s Tel: \_\_\_\_\_

seller' s Fax: \_\_\_\_\_

User's Name: \_\_\_\_\_

User Nature: ☐Individual ☐Unit \_\_\_\_\_

Contact peron: \_\_\_\_\_

Tel: \_\_\_\_\_

User's Address: \_\_\_\_\_

Email Address: \_\_\_\_\_

## Warranty Regulations:

- 1.The screen is under warranty for(     ) years from the date of rchase(the uniform date on the warranty card and purchase invoice shall prevail).
- 2.The warranty card should be completed at the time of purchase,with clear and detailed content.
- 3.The following situations are not covered by free warranty:
  - 3.1 The warranty card is illegible or the content does not match the actual product.
  - 3.2 Damages to the product caused by disassembly, repair,replacement or addition of components without the manufacturers consent.
  - 3.3 Damages caused during transpottation,by accidents or a third party.
  - 3.4 Damages caused by failure to follow the operating methods specified in the User Manual and use in abnormal working environment.
- 4 When returning the product for repair,please return the warranty card together with the product.
- 5 In the event of a product failure,please contact the supplier first.

Thank you again for your order, we hope you enjoy your new purchase!